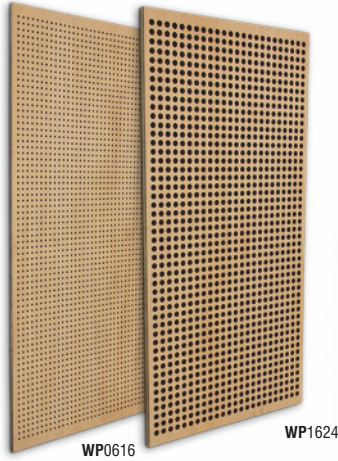




WOODFACE® ABSORBENT PANEL



Images of 120x60cm model Ref. WP0616 and Ref. WP1624 on the left and applied on the background image.

DESCRIPTION

WOODFACE® models are a wooden construction finishing material with acoustic absorbing properties. Following an ecological philosophy, this line of acoustic treatment materials was exclusively developed from recycled pressed wood fibers (HMDF) and coconut fibers, which are recycled materials.

This line of products provides a practical and efficient solution for acoustic treatment. It is composed of coconut fiber (as an energy absorbent material) and perforated panels made of pressed wood fiber (as a finishing surface). This compound, made of strictly 100% recycled materials, has an excellent technical performance. The coconut fiber is a natural, renewable and very light vegetal material. It has high porosity (95% of pores), which translates into an extremely high absorption of sound energy.

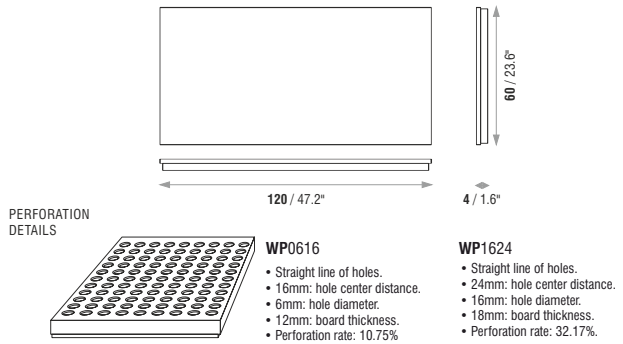
The good behavior of the recycled wood fibers, associated with the coconut fiber's microporous absorbent properties, makes it a natural first-class combination in terms of acoustic solutions.

The WOODFACE® is ideal for installing in auditoriums, conference rooms, sport pavilions, business and public spaces, restaurants and bars, etc... It can be installed with normal wood-strips or with the supplied aluminum interconnection bar.

FEATURES

- Standard perforations / wood finishings and coconut fibres (coir fibres).
- Uses 95% of recycled materials.
- NRC: **0.63/m²** (WP0616) and **0.64/m²** (WP1624).
- Fire-resistance: Wood Veneer Faced (or Engineered Coloured Fibre) Boards - Euroclass B-s2,d0 (similar to old M1), Coconut (Coir Fibre) - Euroclass E (similar to old M4).
- Installation: wood or metal bars.
- Others sizes are available on demand.

TECHNICAL DRAWINGS

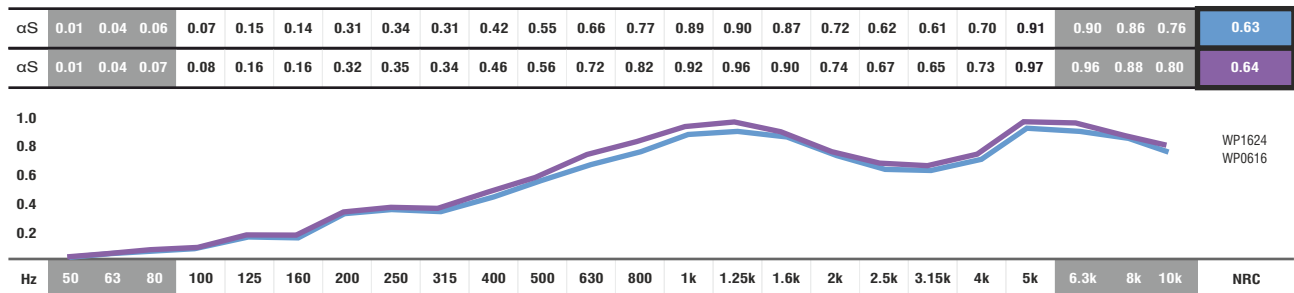


MODELS AND SIZES

MODELS	HEIGHT	WIDTH	DEPTH	WEIGHT
WP0616	120 cm (47.2 in)	60 cm (23.6 in)	4 cm (1.6 in)	2.5 Kg (5.51 lbs)
WP1624	120 cm (47.2 in)	60 cm (23.6 in)	4 cm (1.6 in)	2.5 Kg (5.51 lbs)

OTHER SIZES AVAILABLE UNDER CONSULTING

ABSORPTION COEFFICIENT



■ ABSORPTION COEFFICIENT: Values in accordance with the standards: EN 20654, ASTM C423 and EN 11654.

■ Values [$<100\text{Hz}$ and $>5\text{K}$] are Non Standard Values.

WOOD VENEER FINISHINGS



IMPORTANT NOTICES

- JOCAVI® accepts no responsibility for any printing errors. Specifications can be modified without prior notice, if technical or commercial reasons so require.
- The colours shown on this catalogue are only a reference and an illustration of the products finishing. The colours shown are not binding because brightness, contrast and colour balance may vary due to the printing process.
- Colours may vary due to raw-material suppliers' changes and some differences may occur in tonal range.
- Due to its natural origin, wood-based products will always present natural imperfections inherent to the organic nature. And for similar reasons, they will also present traces of old-age in the course of time.
- Wood and Fabric products are highly susceptible to change its appearance with humidity and temperature. Close attention must be paid to the storage conditions and the acclimatization before, during and after the installation.
- Typical Indoor Comfort Standards state a temperature range of 20°C - 27°C (68°F - 81°F), and a relative humidity of less than 60%. These would be considered as normal operational levels of JOCAVI® products' range.
- Despite all the standard sizes of all products, this model can be customised upon previous consultation. Sizes may vary slightly due to their production method and some inherent raw-materials characteristics.

